

FSX Flight Tracker Setup Guide

Table of Contents

1. Requirements	2
2. Download File	2
3. Install SimConnect	2
4. Setup FSX Flight Tracker	3
5. Running FSX Flight Tracker on a Separate PC	4
6. Screen Capture Option	5
7. Auto Connect Option	5
8. Pause FSX	5
9. Auto Save	5
10. Change Password.....	5
11. Change Profile.....	5
12. Note on Flight Plan	5
13. Connect to FSX.....	6
14. View/Delete Your Flights	7
15. Recommended Steps for Flying	8
16. Changing Flight Plan In-Flight	8
17. Useful Links	9

FSX Flight Tracker Setup Guide

1. Requirements

- 1.1. FSX with SP2/XPack (Acceleration Pack)
- 1.2. Microsoft SimConnect
- 1.3. Microsoft .Net 4.0 Framework

2. Download File

- 2.1. Download fsxtracker.zip from www.fsxtracker.com/download site
- 2.2. Unzip the file to a location in your local drive
- 2.3. There are 3 files in the zip file:
 - Fsxtracker.exe – FSX Flight Tracker program
 - Fsxtracker.exe.config – Configuration file
 - SimConnect.msi – Microsoft SimConnect setup file

3. Install SimConnect

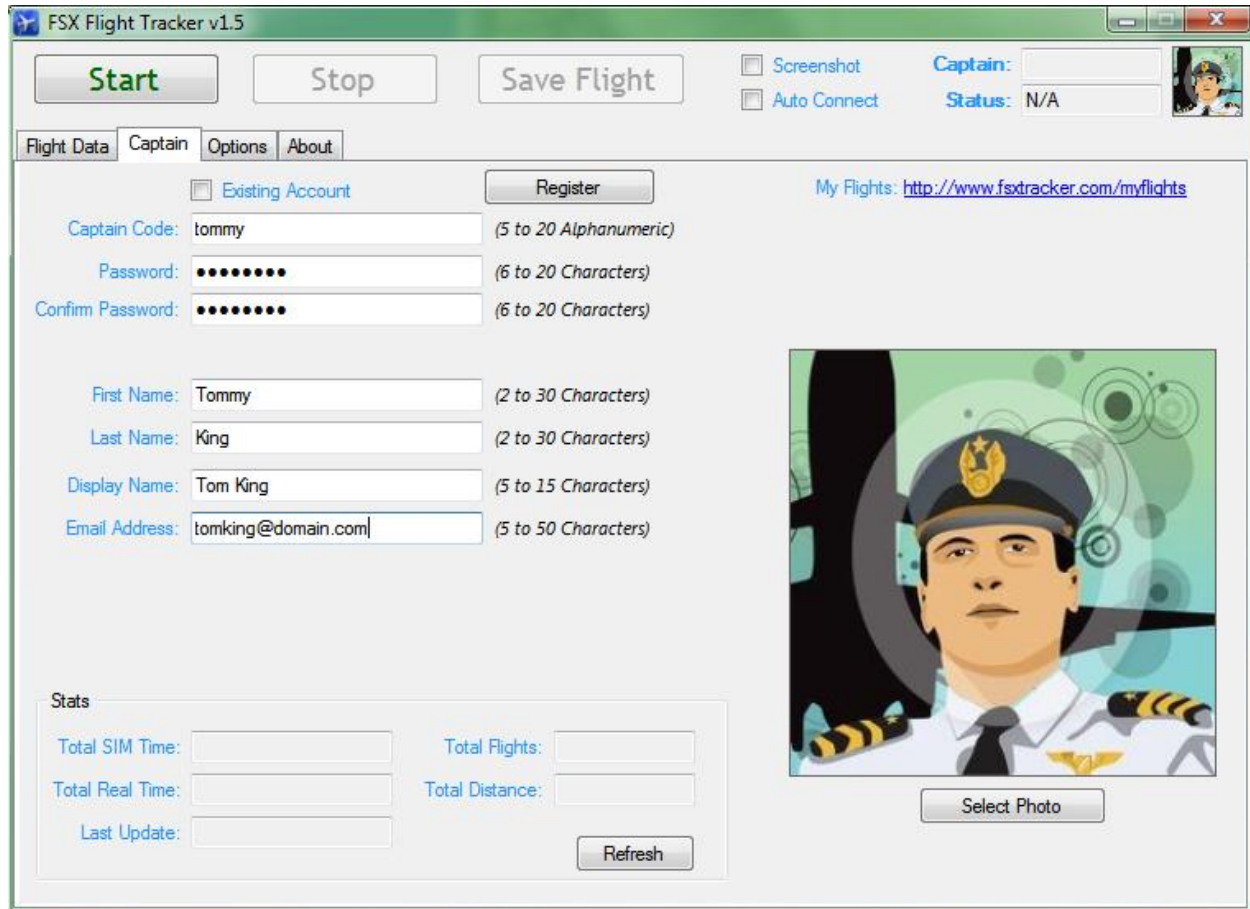
If SimConnect has not been installed on the FSX PC, install SimConnect by double-click on SimConnect.msi and follow the on screen instructions.

If running FSX Flight Tracker on a separate PC, please follow the same step above to install SimConnect on the separate PC.

FSX Flight Tracker Setup Guide

4. Setup FSX Flight Tracker

4.1. Double-Click Fsxtracker.exe to launch the program



4.2. Enter a captain code (Note: captain code cannot be changed after registration).

4.3. Enter password

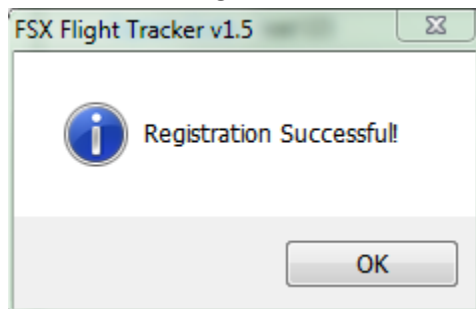
4.4. Confirm password

4.5. Enter first name, last name, display name and email address

4.6. Optionally, you can select a photo by clicking the “select Photo” button

4.7. Click “Register” button

4.8. You should get a successful message:



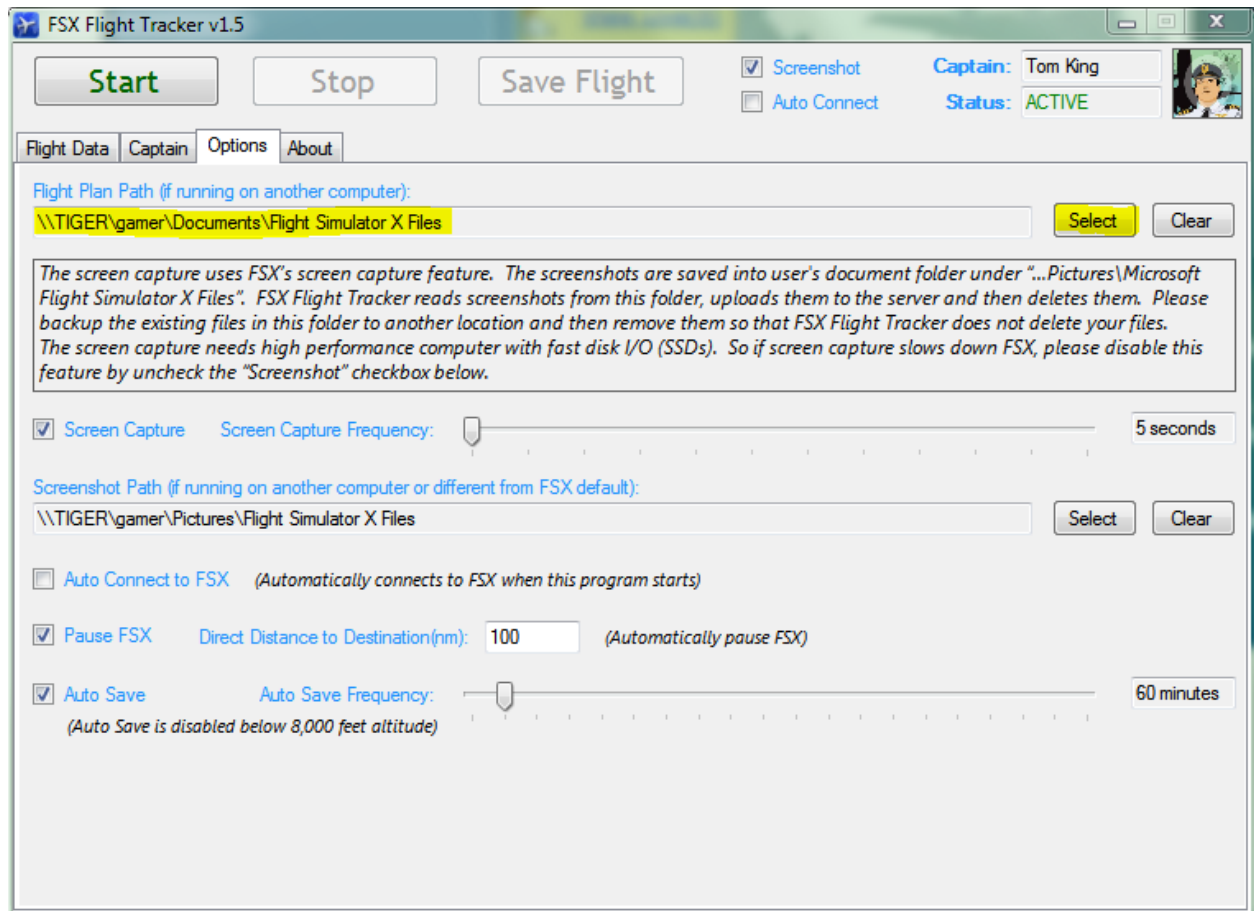
4.9. FSX Flight Tracker is now ready to use

FSX Flight Tracker Setup Guide

5. Running FSX Flight Tracker on a Separate PC

To run FSX Flight Tracker program on a separate PC from the FSX PC, SimConnect needs to be configured on the FSX PC and also on the separate PC. Please search online for additional information on how to setup SimConnect for networking. The following are high level steps:

- 5.1. SimConnect.xml needs to be placed in user's home folder on the FSX PC.
Example: [user root] \AppData\Roaming\Microsoft\FSX\SimConnect.xml
Usually 2 values need to be configured in SimConnect.xml : IP Address of the FSX PC and Port # (default to 500). You may need to set the firewall NOT to block that port #.
- 5.2. SimConnect.cfg needs to be placed in user's "Documents" root folder of the separate PC. This file has the IP Address of the FSX PC and the Port #.
- 5.3. NOTE: when running FSX Flight Tracker program on a separate PC, Flight Plan Path needs to be configured so that FSX Flight Tracker Program can read the FSX flight plan information.
- 5.4. First, grant user's document folder on FSX PC to separate PC with read access.
- 5.5. Then click the "Options" tab on the FSX Flight Tracker program and select the Flight Plan Path:



FSX Flight Tracker Setup Guide

6. Screen Capture Option

- 6.1. To enable screen capture option, go to “Options” tab, check the “Screen Capture” checkbox.
- 6.2. You can also change the screen capture frequency from 5 to 60 seconds in 5-second increment.
- 6.3. If screen capture folder is different from the default or if running on a separate PC, select the folder which has the screenshots.

7. Auto Connect Option

- 7.1. To enable auto connect at start of the program, go to “Options” tab and check “Auto Connect to FSX” checkbox.
- 7.2. You can also click the “Screenshot” checkbox on the top. This will enable (or disable) screen capture but the selection is not saved into the profile.

8. Pause FSX

- 8.1. To enable FSX Flight Tracker to automatically pause FSX at a preset distance to destination, go to “Options” tab and check “Pause FSX” checkbox. Then enter the direct distance to destination value in nautical miles. You must have destination airport in FSX flight plan in order for this feature to work.

9. Auto Save

- 9.1. To enable FSX Flight Tracker to automatically save your flight at a preset time interval, go to “Options” tab and check “Auto Save” checkbox. Then select a time interval between 30 to 600 minutes (10 hours). Your flight will be saved automatically.

10. Change Password

- 10.1. To change password, go to “Captain” tab and click “Change Password” button. Enter old password and new password, click “Submit” button.

11. Change Profile

- 11.1. To change profile information, go to “Captain” tab and click “Change Profile” button. Enter profile information and then click “Submit” button.

12. Note on Flight Plan

- 12.1. FSX Flight Tracker currently only supports FSX flight plan in XML format. If you have flight plans created from other software, after opening the flight plan in FSX, please click “Save” button to save it in FSX XML format. You can either overwrite the existing file or give it a new name.

FSX Flight Tracker Setup Guide

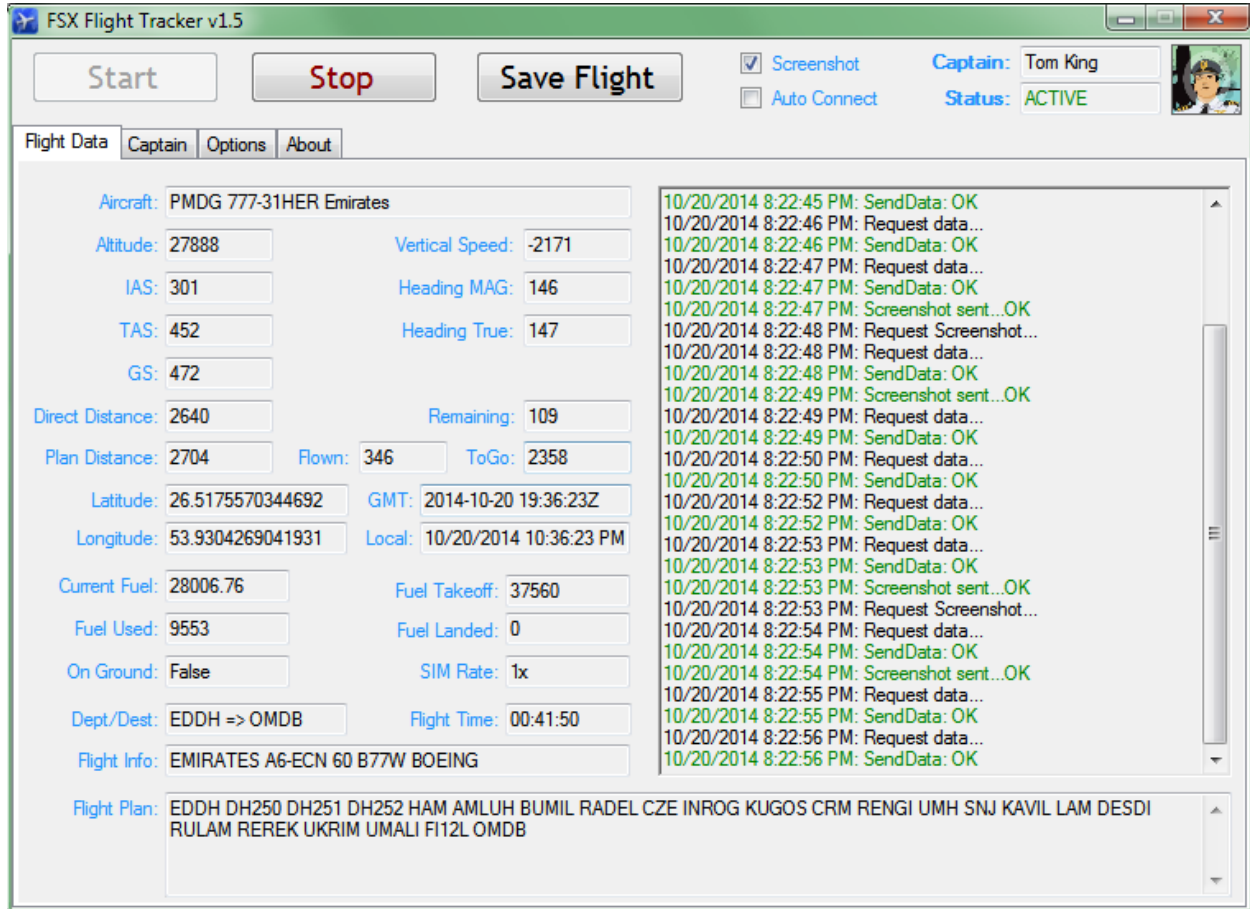
13. Connect to FSX

Ready to use the program!

Start FSX and launch a flight!

Go to "Flight Data" tab, click "Start" button

You should see the data showing on the left of the screen and the logging info on the right side:



FSX Flight Tracker Setup Guide

14. View/Delete Your Flights

View your flights using any browser supporting Google Map.

14.1. View all your flights:

Link:

[http://www.fsxtracker.com/myflights/\[CaptainCode\]](http://www.fsxtracker.com/myflights/[CaptainCode])

Example: <http://www.fsxtracker.com/myflights/tigerhuey>

14.2. View live Flight:

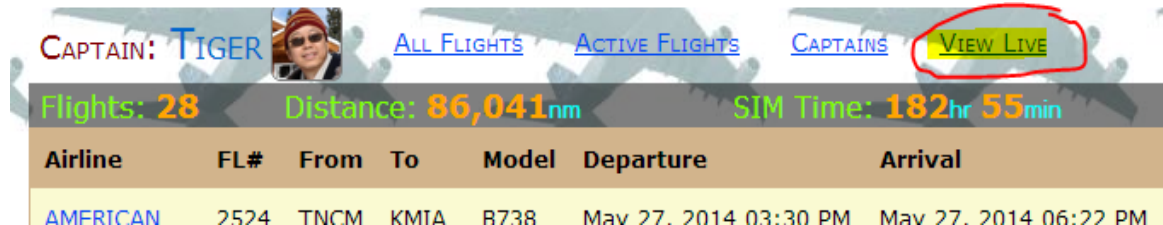
Link:

[http://www.fsxtracker.com/liveflight/\[CaptainCode\]](http://www.fsxtracker.com/liveflight/[CaptainCode])

Example: <http://www.fsxtracker.com/liveflight/tigerhuey>

Or

Go to My Flights using link in 12.1 and click “View Live” link:



The screenshot shows the FSX Flight Tracker interface. At the top, there is a navigation bar with links for 'ALL FLIGHTS', 'ACTIVE FLIGHTS', 'CAPTAINS', and 'VIEW LIVE'. The 'VIEW LIVE' link is highlighted with a red circle. Below the navigation bar, there is a summary section showing 'Flights: 28', 'Distance: 86,041nm', and 'SIM Time: 182hr 55min'. Below this is a table with columns for 'Airline', 'FL#', 'From', 'To', 'Model', 'Departure', and 'Arrival'. The first row of the table shows 'AMERICAN', '2524', 'TNCM', 'KMIA', 'B738', 'May 27, 2014 03:30 PM', and 'May 27, 2014 06:22 PM'.

Airline	FL#	From	To	Model	Departure	Arrival
AMERICAN	2524	TNCM	KMIA	B738	May 27, 2014 03:30 PM	May 27, 2014 06:22 PM

FSX Flight Tracker Main Site: <http://www.fsxtracker.com>

14.3. Delete your flights:

Log in to <http://www.fsxtracker.com> via this link:

<http://www.fsxtracker.com/account/login>

You should see a delete icon on the right.

Just click the delete icon to delete your flight.

FSX Flight Tracker Setup Guide

15. Recommended Steps for Flying

Here are the suggested steps for FSX Flight Tracker to auto detect your flights for take-off and landing.

- 15.1. Start FSX Flight Tracker (you can set it to auto-connect mode).
- 15.2. Start FSX.
- 15.3. Load or create flight plan in FSX. If you don't have a flight plan, just enter the departure and destination airports, user "Direct – GPS" option. Save your flight plan.
- 15.4. Select your aircraft (and other settings).
- 15.5. Start FSX.
- 15.6. Click "Start" button I FSX Flight Tracker screen (if auto-connect is not enabled).
- 15.7. If you need to taxi to the runway, make sure that you don't exceed **50kts** ground speed. Exceeding **50kts** ground speed triggers FSX Flight Tracker to create and track your flight.
- 15.8. Take-off! When **50kts** ground speed is reached, FSX Flight Tracker automatically create a flight and start tracking it.
- 15.9. Fly to destination!
- 15.10. After landing, bring your aircraft to below **30kts** ground speed. FSX Flight Tracker automatically ends your flight when it detects ground speed below **30kts**.
- 15.11. Continue to taxi to the gate.
- 15.12. If you want to continue flying without exiting to FSX Main Menu, then load a new flight plan in FSX. Repeat steps from 13.7.
- 15.13. FSX Flight Tracker automatically detects a new flight plan.

16. Changing Flight Plan In-Flight

Sometime you may want to change flight plan while flying. FSX Flight Tracker does not detect flight plan changes while in-flight. Here is how you can trigger FSX Flight Tracker to re-process your new flight plan.

- 16.1. Change flight plan in FSX.
- 16.2. Stop FSX Flight Tracker.
- 16.3. Start FSX Flight Tracker.
- 16.4. FSX Flight Tracker should re-process our new flight plan.

FSX Flight Tracker Setup Guide

17. Useful Links

<http://flightaware.com/>

This site has the real world flight information. You can get the flight plans (among other information) from this site.

<http://www.simroutes.com>

This site can produce flight plans in various format including FSX, PMDG and others. You can search for existing flight plans. Or get the flight plans from <http://flightaware.com/> and let <http://www.simroutes.com> generate flight plans for you. Note that the FSX flight plans are not in XML format. After loaded into FSX, save it and it will be in XML format.

<http://rfinder.asalink.net/free/>

This site can generate flight plan from and to any airports. Take the flight plan path from this site and use <http://www.simroutes.com> to generate the flight plans.

<http://www.vataware.com/>

You can search this site for the flight plans from virtual flights. Take the flight plan path from this site and use <http://www.simroutes.com> to generate the flight plans.

<http://fsxdb.com/>

This site has the airport information including elevation, runways, ILS frequencies, etc.

Thank You!

Good Luck!

Happy Flying!